



SULGRAVE ROAD W6

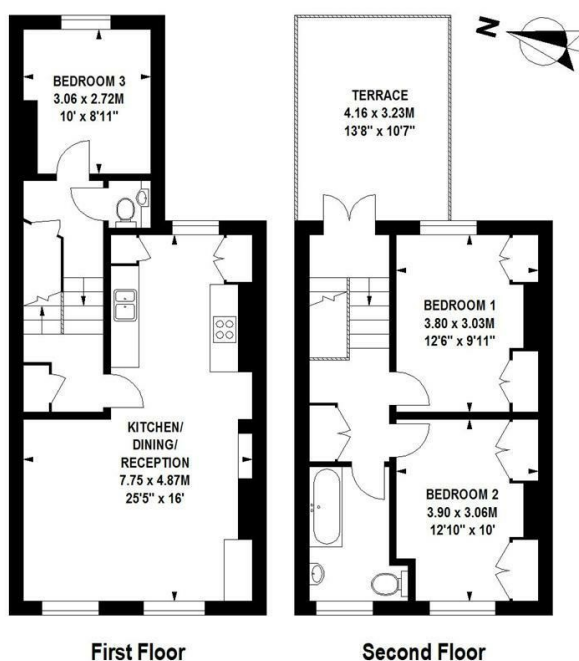




- 3 BEDROOMS • WOODEN FLOORS • OPEN PLAN RECEPTION • FAMILY KITCHEN • COUNCIL TAX BAND E • PRIVATE ROOF TERRACE • QUIET LOCATION • CLOSE TO WESTFIELD LONDON AND TRANSPORT LINKS • PART FURNISHED • AVAILABLE 20TH FEBRUARY

Fantastic 3 bedroom maisonette, with wooden floors, open plan reception, fitted kitchen, family bathroom, separate WC and private roof terrace. Located in a quiet residential street, close to Westfield London, White City House and the transport links at Hammersmith, Goldhawk Road and Shepherds Bush. Available 20th of February. Part furnished. Council tax Band E.

Sulgrave Road, W6
Approximate gross internal area
87 sq m / 936 sq ft



Floor Plan produced for Finlay Brewer by Mays Floorplans © . Tel 020 3397 4594
 Illustration for identification purposes only, not to scale
 All measurements are maximum, and include wardrobes and window bays where applicable

138 Shepherds Bush Road, London, W6 7PB
Tel: 020 7371 4071 lettings@finlaybrewer.co.uk